

**AUTOMATION • TOOLING • ENGINEERING • MACHINING
BUILD TO PRINT SERVICES • WELDING AND FABRICATION • REPAIR SERVICES
EQUIPMENT SERVICES • FIXTURES, MOLDS, DIES**

GLAZE

TOOL AND ENGINEERING INC.

www.glazetool.com

SINCE 1974



Custom parts solutions for a wide range of industries.

Glaze Tool and Engineering provides custom automation systems and tooling for a broad variety of industries, including the appliance, agriculture, automotive, medical, pharmaceutical and consumer product markets.

Our experienced team of project managers, mechanical engineers, controls engineers, machinists and assemblers design and produce robust custom solutions that offer long-term reliability. Our modern manufacturing facility is equipped with cutting-edge production machinery and processes, from advanced sensor and robotics to work cells.

What makes Glaze different?

- **Custom-engineered solutions.** We're focused on tailoring solutions to your exact needs, for processes including assembly, metal fabrication, tool and die and material handling. We're a great resource for our customers, often suggesting solutions that save them time and money.
- **Large projects or small.** Whether your project needs a full design and build, an improvement of a current design, or a duplicate of a current system, Glaze is your best value supplier.
- **We don't sub work out.** We produce about 95% of our projects in-house — as opposed to sending it out. As a result, we achieve tighter quality control and greater efficiency for our customers.
- **Experience that shows.** Glaze Tool and Engineering was established in 1974, and that depth and breadth of experience shows in our constant innovation. We hire the most experienced toolmakers, machine builders, machinists, engineers and designers, and many of our employees have more than 10 years seniority, giving us a deep bench of skills and knowledge.

- **Long-lasting customer relationships.** For three generations, our focus has been on building excellent relationships with our customers by helping them succeed. In fact, some of our customers have been with us for more than 30 years.

Experience and knowledge set the Glaze engineering team apart.

While we at Glaze Tool and Engineering take pride in our products, perhaps even more important are the skilled professional engineers we deploy on our clients' projects.

Range of knowledge.

With over 100 years of collective experience in supporting engineering solutions for a wide range of clients, our team of engineers can resolve most challenges quickly. Because of the diversity of our clients, our engineers bring an exceptional range of product knowledge and experience — and that means we often are able to design beyond conventional solutions.

Up-to-the-minute training

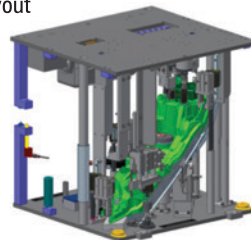
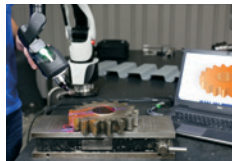
In addition to continually honing their knowledge on the job, our engineers take advantage of additional training provided by our suppliers. These regular sessions help keep our engineers up to date professionally with the latest in best practices and products.

Teamwork

Glaze engineers work as a team, which offers our clients significant advantages. You'll gain the benefit of multiple top experts working on your project, each bringing a slightly different angle to the challenge. Moreover, our team approach ensures that your company will never be left stranded in an emergency.

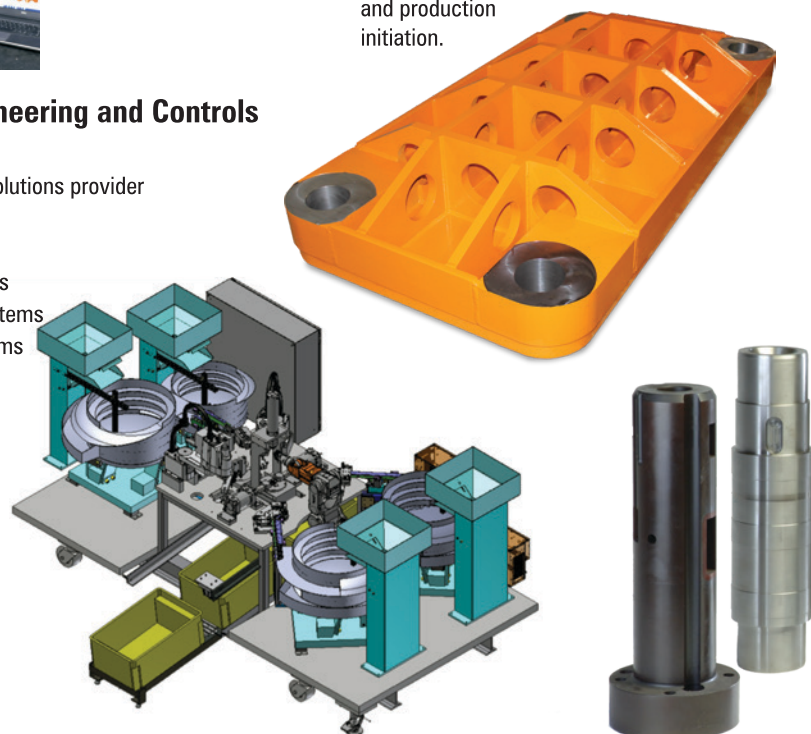
Engineering Services

- Concepting/equipment layout
- Product design
- 2D and 3D design
- Project management
- Reverse engineering



Electrical Engineering and Controls

- Robotic integration
- Authorized Fanuc solutions provider
- PLC
- Motion controls
- Motor drive systems
- Process control systems
- Touch screen systems
- Panel building
- Data collection
- Vision systems



Automation

Industry-leading products and services for robotics, motion control systems, vision systems and factory automation.

The team at Glaze Tool and Engineering utilizes robotics in many of our systems to maximize speed and accuracy. Robots are ideal for the most demanding and complex production requirements, and our engineers are experts in integrating robots into automated assembly systems. In fact, we are an authorized integrator for FANUC America, one of the leading providers of factory automation.

We work with you through the entire system development process, from initial systems concept to final integration. All along the way, our engineers can help you make informed decisions about your manufacturing requirements and resources.

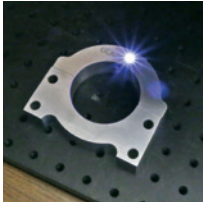
Services we provide include:

- Free initial consultation and equipment quotation.
- Help with selecting the level of automation you need to meet your manufacturing requirements.
- Product Design (or redesign) for Automatic Assembly, if requested or required.
- System Design for your review, refined specifications and system acceptance criteria.
- System fabrication and assembly of equipment to mutually agreed-upon specifications.
- System "run off" to prove to your satisfaction that the equipment will meet these specifications.
- Help during system installation and production initiation.



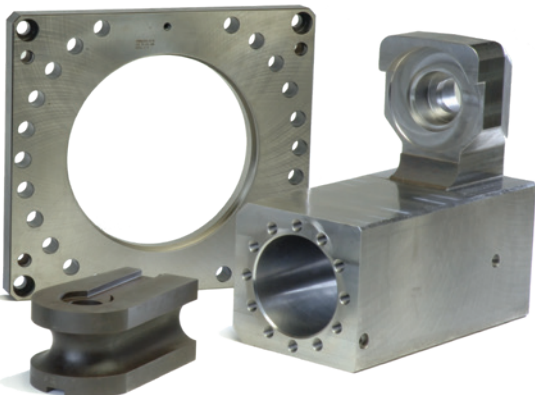
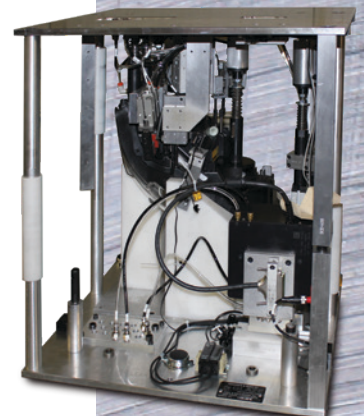
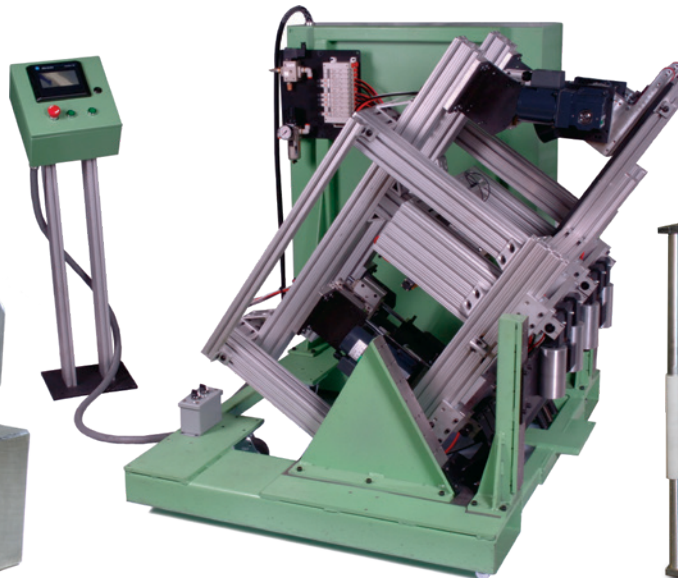
SERVICES

- Build to Print Services
- Custom Machine Parts
- Precision Machining
- Welding and Fabrication
- Repair Services
- Emergency and same-day service
- Equipment Services
 - Our controls staff is experienced with:
 - Allen Bradley PLCs
 - Allen Bradley Operator interface
 - Allen Bradley Drives and Servos
 - Fanuc Robotics
 - Motoman Robotics
 - Baldor Drives and Servos
 - Omron PLC's
 - Omron Operator Interface
 - Mitsubishi PLC
 - Mitsubishi Operator Interface
 - Proface Operator Interface
 - Exor Operator Interface
 - Nematron Operator Interface
 - Siemens PLC
 - And many others
- Equipment rebuilds and equipment retool
- Fixtures, Molds, Dies
- Laser Marking System



MACHINING CAPABILITIES

- CAD/CAM programming systems
- Large horizontal CNC boring mill 60x80
- Large Vertical CNC machining centers 30x60
- EDM CNC wire
- Gundrilling
- Grinding surface, Blanchard and OD/ID
- CNC Lathes



OUR CUSTOMERS - A PARTNER FOR THE FUTURE.

Putting Our Customers First.

For us, a key definition of success comes by looking at our customer relationships. And by that measure, Glaze Tool and Engineering is doing well indeed. We have an exceptionally high customer retention rate, which tells us that we're doing more than a few things right. Moreover, some customers have been working with us almost as long as we've been in business.

Listening to Our Customers.

We think it boils down to more responsive customer service, as well as our work product. From the first, we focus on listening to you carefully, making sure we thoroughly understand your manufacturing challenge. As we start work, you can expect regular contact with us, from concept to completion. We understand your needs, tailor solutions and track details.

Giving Our Customers Value.

We work with you to make sure our solutions meet your needs exactly, solve your problems, or produce the savings in time or money you were looking for. And we follow up after delivery or installation to make sure that's still the case. In other words, we go "above and beyond" to make sure you're satisfied.

A lot of companies talk about their customer service commitment, but we believe that we "walk" the talk. When you work with Glaze Tool and Engineering, we're treating you like the long-term partner we want you to become.

"Customer service that focuses on long-term partnership."



SINCE 1974

GLAZE

TOOL AND ENGINEERING INC.

1610 Summit St.
New Haven, Indiana, 46774

Phone: 260-493-4557

Fax: 260-493-3489

sales@glazetool.com

www.glazetool.com



MADE IN THE USA

